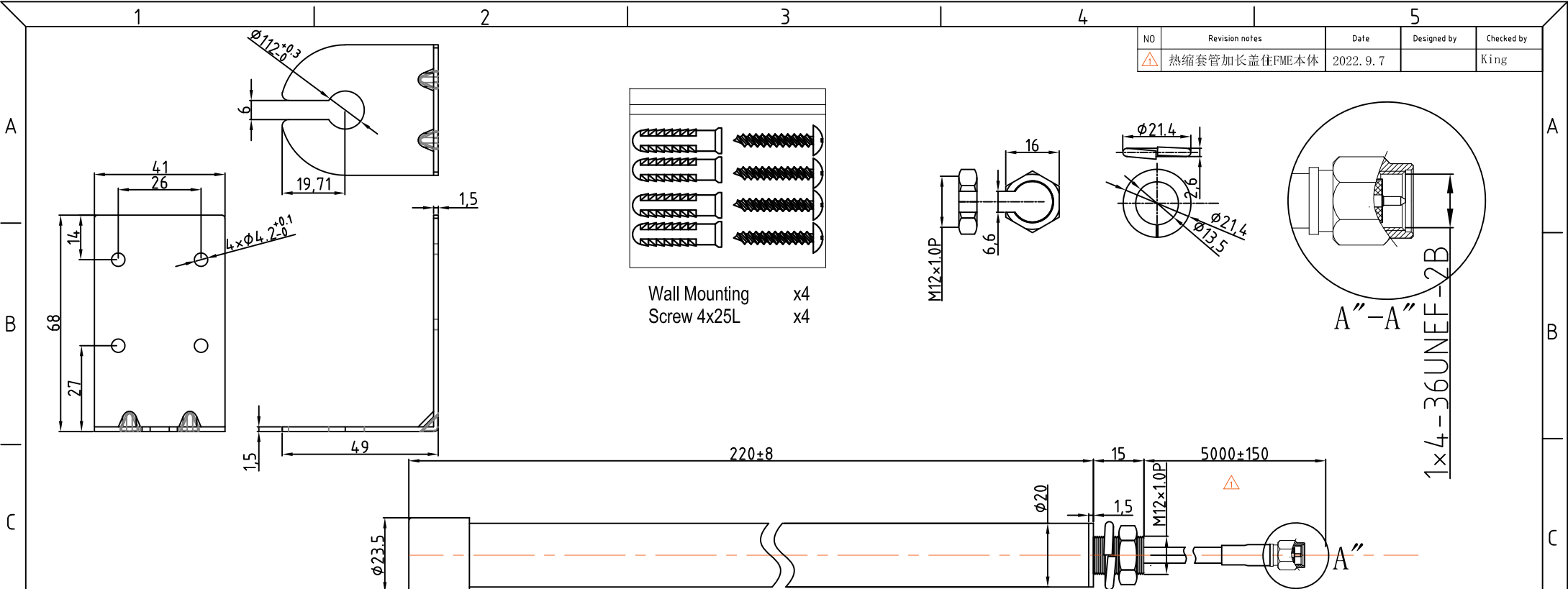


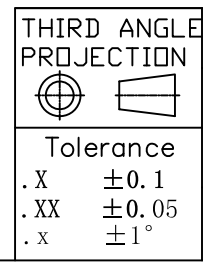
NO	Revision notes	Date	Designed by	Checked by
△	热缩套管加长盖住FME本体	2022.9.7		King



BOM

NO	Name	Material	Finish	QTY
1	Connector	SMA	Gold	1
2	Antenna mast			1
3	Antenna cover	FRP	BLACK	1
4	Screw	Brass	NI	1
5	NUT	Brass	NI	1
6	WASHER	FE	NI	1
7	RG58 Cable	PVC	BLACK	1
8	Bracket	Al	Black	1
9	Shrink Tuge	PE	BLACK	1
10	NUT 4*25	SUS	Silver	4
11	Wall	PP	White	4

Electrical Properties	
Frequency Range	868~925MHz
Impedance	50 Ω
V.S.W.R.	≤2.0
Radiation	Omni
Gain	3.5dBi
Polarization	Vertical
Mechanical Properties	
Whip	glass steel pipe
Standard Connector	SMA Connector
Weight	- g(est)
Operating Temp	-40~+80°



DRAWN BY	HZH	MATERIAL:	
CHECKED BY		FINISH:	BLACK
APPROVED BY	King	UNIT:	mm
DATE:	22.9.7	SCALE:	1/1

PART NO: M220. I1. 1. 333
 TITLE: 868MHz Antenna

RS RUNSHUN
 Dongguan RunShun/www.rsantenna.com